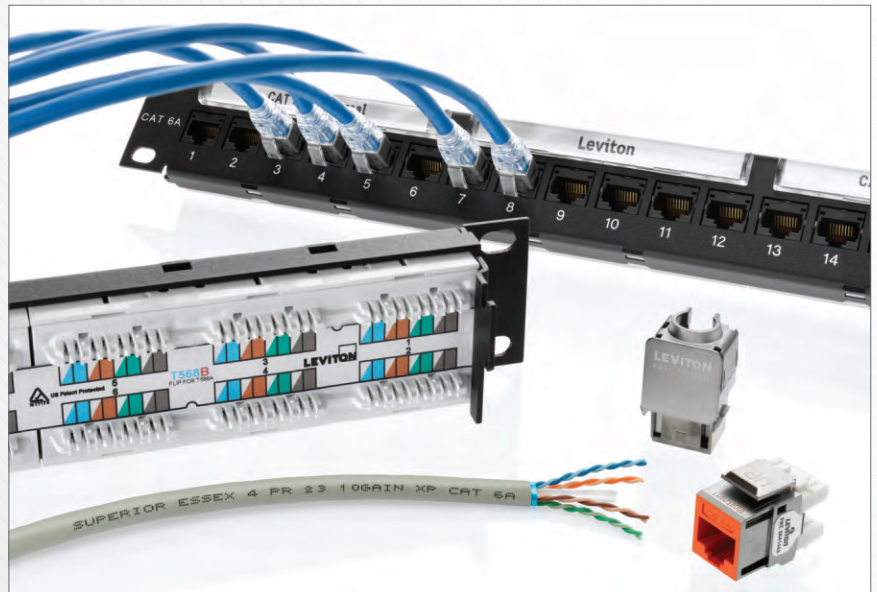


**NextLAN**<sup>®</sup>  
LEVITON<sup>®</sup> SUPERIOR ESSEX<sup>®</sup>

# AXi Category 6A

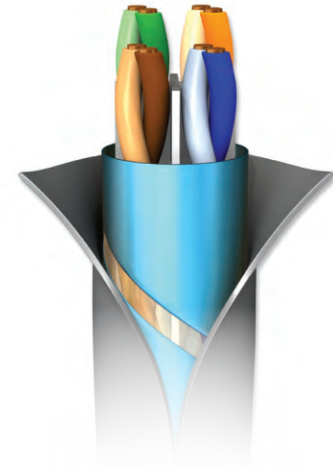
UTP COPPER CABLING SYSTEM



performance without compromise

# AXi Category 6A

AXi is the first CAT 6A UTP cabling system to offer 4 dB alien crosstalk (AXT) margin<sup>1</sup> over TIA-568-C.2 performance requirements. The solution features the Superior Essex **10Gain<sup>®</sup> XP** cable with a non-conductive Isolation Wrap and an outside cable diameter of only 0.295 inches. The system also utilizes the advanced technology of Leviton's CAT 6A connectivity system, including eXtreme<sup>®</sup> CAT 6A component-rated connectors, SlimLine component-rated patch cords and 110-style patch panels. The system is guaranteed to meet all CAT 6A requirements for short links and channels, down to a 10-foot link.



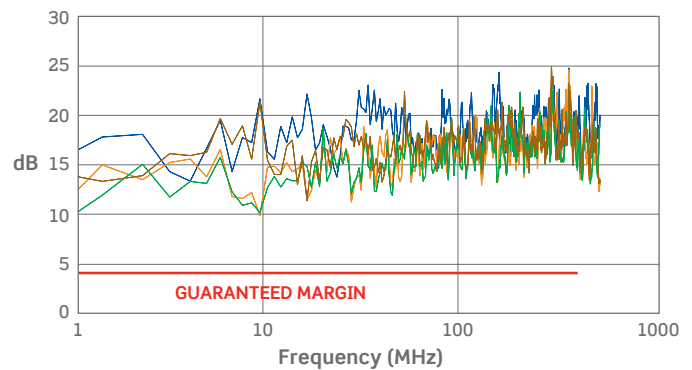
## System Benefits

- 4 dB margin for AXT guaranteed; field testing not required
- 0.295-inch cable outer diameter for improved space utilization
- Guaranteed to exceed all TIA-568-C.2 link, channel and component, IEEE 10GBASE-T (802.3an) and ISO/IEC 11801 Class E<sub>A</sub> requirements
- Guaranteed to meet all CAT 6A requirements for short links and channels, down to a 10-foot link
- Uses standard UTP connectors and installation methods
- Lifetime warranty on certified installations
- Fully complies with UL 444 and NEC for an unshielded cabling network
- All system components are RoHS-compliant
- Backwards compatible with CAT 5e and CAT 6 performance

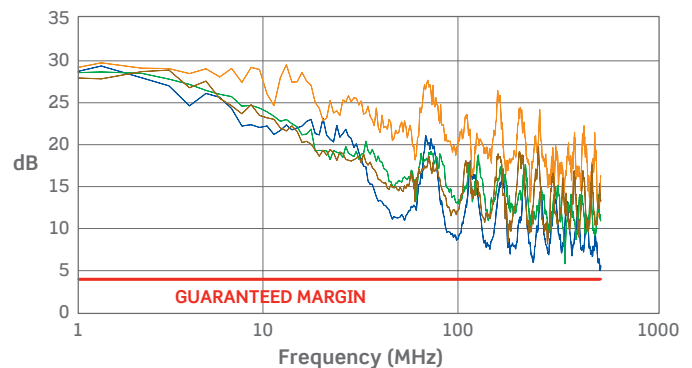
NextLAN AXi CAT 6A UTP Channel Margin Guarantees <sup>2</sup>			
	Margin vs. TIA-568-C.2		Margin vs. ISO/IEC 11801 Ed. 2.2
Insertion Loss	3%		3%
NEXT	1 dB		0 dB
ACR <sup>3</sup>	3 dB		2 dB
PSNEXT	2 dB		1 dB
PSACR <sup>3</sup>	4 dB		3 dB
ACRF (ELFEXT)	5 dB		5 dB
PSACRF (PELFEXT)	6 dB		6 dB
Return Loss	3 dB		2 dB
PSANEXT	4 dB		4 dB
PSAACRF	4 dB		4 dB

<sup>1</sup>As a component of the NextLAN AXi CAT 6A UTP system  
<sup>2</sup>Guaranteed channel margin to 500 MHz frequency range; performance tested to 650 MHz  
<sup>3</sup>10G<sup>®</sup> ACR and PSACR margin guarantee is minimum performance vs. calculated minimum defined by TIA-568-C.2 from 1 to 500 MHz

PSACR, Worst Case Bidirectional Margin, 100-Meter Channel\*



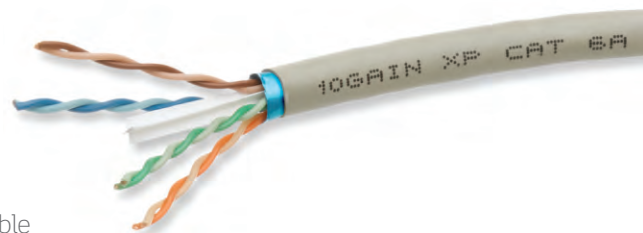
PSANEXT, Worst Case Bidirectional Margin, 100-Meter Channel\*



\*Worst case 4-connector channel results from independent laboratory channel performance tests

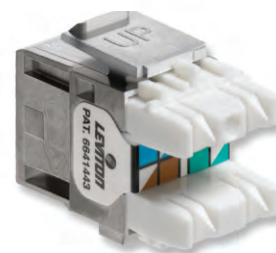
### Superior Essex 10Gain® XP CAT 6A UTP Cable

- Utilizes non-conductive Isolation Wrap with discontinuous metallized sections to suppress AXT and provide guaranteed margin
- Nominal diameter of 0.295 inches (CMR and CMP)
- Requires no grounding or bonding at termination
- 100% perfectly round design is optimal for installation flexibility
- UL tested for plenum (NFPA 262) and riser (UL 1666) environments
- CableID® alpha numeric code (printed every 2 feet) allows both ends of a cable run to be easily identifiable without the need to separately label or tone the cable
- QuickCount® marking system (feet and meters) provides remaining length of cable on reel and ColorTip™ circuit identification system makes conductor mates easily identifiable



### Leviton eXtreme® CAT 6A QuickPort® Component-Rated UTP Connector

- Patent-pending triple-stage compensation design with integrated flexible circuit enhances link and channel performance
- Patented Retention Force Technology (RFT) protects tines from damage from 4-pin or 6-pin plugs
- AXT suppressed by patented Cone of Silence®, metallized body and new circuit board
- Pair Separation Tower design facilitates separation of CAT 6A conductors
- Patented dual-layer wiring label simplifies termination
- Conductor retention feature holds conductor in place during termination
- Cable entry can be 90° or 180° to fit any application
- Snap-in installation to Leviton's broad range of QuickPort patch panels, wallplates or surface mount housings
- Independently tested by Intertek (ETL) to meet all TIA-568-C.2 component requirements



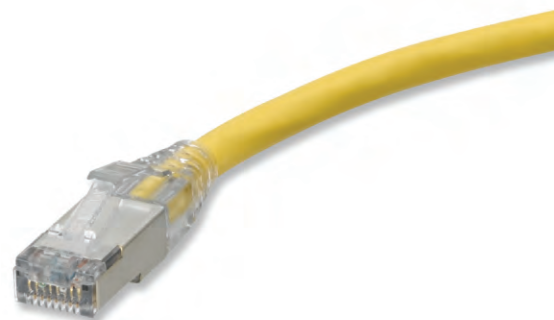
### Leviton eXtreme CAT 6A UTP Patch Panels

- Inline IDC field is consistent with existing 110-style panel designs
- Patent-pending triple-stage compensation design with integrated flexible circuit enhances link and channel performance
- Pair Separation Tower design facilitates separation of CAT 6A conductors
- Patent-pending isolation gap on circuit board minimizes AXT between ports
- Conductor retention feature keeps cable pairs in place during termination
- 110-style panels independently tested by ETL to meet all TIA-568-C.2 component requirements



### Leviton CAT 6A Component-Rated SlimLine Patch Cord

- SlimLine plug design reduces congestion in higher density applications
- Snagless design prevents tab breakage during MAC work
- Strain relief boot ensures long-term network performance
- Stranded 26-gauge construction provides longer flex-life
- 0.24-inch outside diameter maximizes flexibility
- FTP construction provides excellent AXT mitigation
- Independently tested by ETL to meet all TIA-568-C.2 component requirements



## Lifetime Warranty

NextLAN system performance guarantees are backed by a lifetime warranty on certified horizontal and backbone systems with:

- A single point of contact
- Comprehensive coverage

Installed verification of permanent link performance provides automatic full channel warranty (when Leviton patch cords are used). Visit [NextLANsystems.com](http://NextLANsystems.com) for more information.

## Testing/Certification

NextLAN systems are installed and thoroughly tested by highly trained technicians who have been certified by Leviton and Superior Essex.

## NextLAN AXi Ordering Information

Superior Essex 10Gain® XP CAT 6A UTP Cable				
Listing	Part No.	Nom. Diameter in (mm)	Approx. Weight lbs/kft (kg/km)	Package
CMR	6H-272-xA	0.295 (7.49)	47 (70)	1,000' Plywood Reel
CMP	6H-272-xB	0.295 (7.49)	45 (67)	1,000' Plywood Reel

x = Jacket Color: Choose from any of the colors below.



Leviton QuickPort® CAT 6A UTP Connector	
Description	Part No.
eXtreme CAT 6A Component-Rated Connector	6A10G-R*6

\* = Color: Choose from any of the colors below.



Leviton eXtreme® CAT 6A UTP Patch Panels		
Description	24-Port	48-Port
110-Style Flat Panel	6A586-U24	6A586-U48
110-Style Angled Panel	6A587-U24	6A587-U48
QuickPort Flat Panel*	6910G-U24	6910G-U48
QuickPort Angled Panel	49256-H24	49256-H48
1RU QuickPort Flat Panel Empty		49255-D48
1RU QuickPort Angled Panel Empty		49256-D48
C1 Ultra Composite QuickPort Flat Panel Empty		C1255-H48

\*Kitted with black CAT 6A component-rated connectors. Additional QuickPort patch panels available.

Leviton eXtreme CAT 6A Patch Cord	
Description	Part No.
CAT 6A Component-Rated SlimLine Patch Cord	6AS10-xx*

xx = Length: (03), (05), (07), (10), (15) or (20) feet. Custom length cords available, call for more information.  
\* = Color: Choose from any of the colors below.



[NextLANsystems.com](http://NextLANsystems.com)

© 2010 NextLAN Systems. All Rights Reserved.

**NextLAN**<sup>®</sup>  
LEVITON<sup>®</sup> SUPERIOR ESSEX<sup>®</sup>



**Superior Essex  
Communications LP**

6120 Powers Ferry Road, Suite 150  
Atlanta, GA 30339  
800.551.8948  
[SuperiorEssex.com/Comm](http://SuperiorEssex.com/Comm)

**LEVITON**

**Leviton Network Solutions**

2222 222nd Street SE  
Bothell, WA 98021-4416  
800.722.2082  
[Leviton.com](http://Leviton.com)

G/10-#3449s    NXT 147  
3K  
7/2010