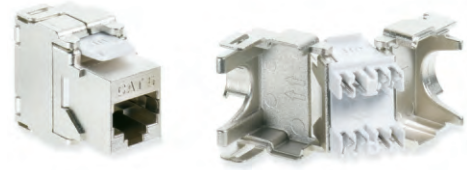


# Category 5e F/UTP

## SHIELDED COPPER CABLING SYSTEM

The NextLAN CAT 5e F/UTP system offers guaranteed performance beyond 100 MHz and meets all applicable TIA-568-C.2 requirements. Superior Essex offers Screen Twisted Pair (ScTP) CAT 5e+ cables in both plenum and riser versions. The cable consists of four (4) balanced 24-gauge copper pairs. The core is wrapped with an aluminum foil tape and has a tin coated drain wire. Combined with Leviton's Shielded CAT 5e connectors, Shielded SlimLine patch cords, and 24- and 48-port QuickPort® Shielded flat and angled patch panels, the shielded system protects against EMI and RFI, and provides excellent data security. As a result, the system is ideal for healthcare, government, manufacturing, gaming and other environments where EMI may be present and data security is paramount.

Leviton QuickPort® CAT 5e Shielded Connector	
Description	Part No.
CAT 5e Shielded Connector	5S180-SH5



Leviton QuickPort CAT 5e Shielded Patch Panels	
Description	Part No.
1RU 24-Port QuickPort Shielded Flat Panel	4S255-S24
2RU 48-Port QuickPort Shielded Flat Panel	4S255-S48
1RU 24-Port QuickPort Shielded Angled Panel	4S256-S24
2RU 48-Port QuickPort Shielded Angled Panel	4S256-S48

Panels accept all Leviton category-rated shielded connectors (connectors sold separately).



Leviton CAT 5e Component-Rated SlimLine Shielded Patch Cord	
Description	Part No.
CAT 5e Shielded Patch Cord with Matching Boot, grey only	5S460-xxS

xx = Length: (03), (05), (07), (10), (15) or (20) feet.  
 Custom length cords available, call for more information.



Superior Essex CAT 5e+ F/UTP (ScTP) Cable				
Listing	Part No.	Nom. Diameter in (mm)	Approx. Weight lbs/kft (kg/km)	Package
CMR	5F-220-x5	0.28 (7.1)	31 (46)	1,000' Plywood Reel
CMP	5F-220-x8	0.25 (6.4)	30 (45)	1,000' Plywood Reel



x = Jacket Color: Choose from any of the colors below.

